



IOWAVIEW 2023 - 2024

AmericaViewSM
Empowering Earth Observation Education
americaview.org

IOWAVIEW 2023 - 2024 ACTIVITIES

Continue Expanding Iowa's K-12 Earth Observation Education Network Through Workshops and Creating Resources for K-12 Educators

This grant year was a year of transition for the IowaView Program. In January 2024, IowaView's longtime Principal Investigator (PI), Robin McNeely retired from Iowa State University after over 25 years. Thank you, Robin, for leading the IowaView state consortium for the past nine years and for your service as an AmericaView Board Member. Fortunately, Robin agreed to continue to serve out her term on the AmericaView board.

In December 2023, Dr. Brian Gelder, a professor in Agriculture and Biosystems Engineering at Iowa State University, was appointed as the new PI for IowaView and Amy Logan, continues to serve as the state coordinator. As with any transition, there has been a learning curve as the IowaView team adjusts to new roles and responsibilities. While this has required adaptations in some regards, these changes have also brought opportunity for growth and change for IowaView and the opportunity to reach out to new groups to join the IowaView state consortium.



*Celebrating Retirements - Members of the ISU GIS Facility: Robin McNeely (retired January 2024); Josh Obrecht; Amy Logan; Kevin Kane (retired Septemver 2024); Wael Alhaj. *Not pictured: Colton Clack and Brian Gelder.**

During GY 2023, our focus continued reaching across disciplines to show how GIS, remote sensing, and geospatial thinking apply to all. This year we were able to visit a pre-service social studies classroom, share professional development sessions at K-12 teacher conferences, and continue partnering with educational partners to provide complementary programming.

Highlights from GY23:

Outreach Events

Earth Observation Day 2023 - A Day to Explore Geospatial Careers and Pathways - Five geospatial professionals from diverse sectors came and shared about their GIS pathway and about their current GIS career.

GIS Day 2023 at The Catalyst in ISU Parks Library - IowaView provided outreach materials: posters, books, trading cards, and geocoins. This was a day long collaborative event with the university library and the GIS Facility.

Professional Development for K-12 and Pre-service Teachers

- Iowa Technology Education Conference for IT professionals in Nevada, Iowa, on 2/16/24, "An Introduction to Managing and Deploying ArcGIS Online Orgs in K-12 schools."

- Visited Dr. Amy Rutenberg's pre-service social studies classroom at ISU on 4/1/24, "Using GIS and Digital Mapping in Social Studies Classrooms."

- Presented at the National Art Education Association National Conference in Minneapolis, Minnesota, on 4/4/24, Data Visualization Deep Dive, "Discovering Earth as Art."



Dr. Thomas Larsen, a geography professor at the University of Northern Iowa presenting at Earth Observation Day.



Earth Observation Day Attendees.

IowaView is a member of the AmericaView Consortium, a nationally coordinated network of academic, agency, non-profit, and industry partners and cooperators that share the vision of promoting and supporting the use of remote sensing data and technology within each state. AmericaView is funded by USGS grant agreement G23AP00683.

AmericaViewSM
Empowering Earth Observation Education
americaview.org

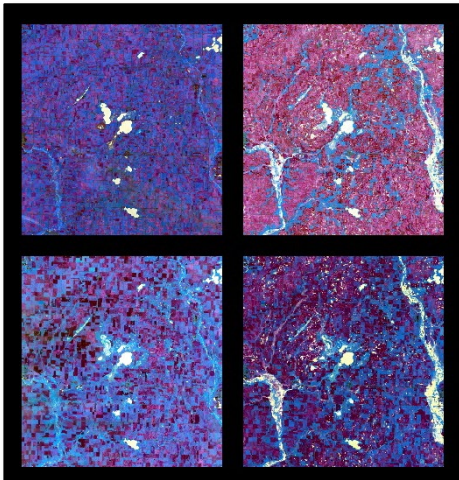
AmericaView Website:
www.AmericaView.org
Christopher McGinty, Executive Director:
chris.mcginty@americaview.org
Lisa Wirth, Program Director:
lisa.wirth@americaview.org
Lindi Quackenbush, Board Chair:
lquack@esf.edu

BENEFITS TO IOWA

IowaView Website: IowaView continues to have an active website presence (12 posts during GY23 and 184 archived posts). In GY23, the website recorded 2,700 users viewing 3,984 pageviews. The IV blog had a special outreach effort during Geography Awareness Week in November 2023.

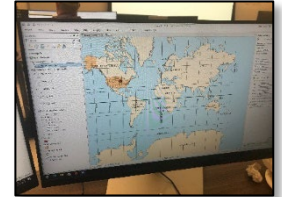
Some metrics from the GY23 reporting year:

- EOD and GIS Day Outreach events included a total of approximately 50 students, 10 professors, and 50 general public/professionals
- 40 K-12 teachers received training during conference sessions and workshops
- 8 pre-service social studies teachers attended a GIS classroom visit from IowaView state coordinator
- Over 200 K-12 teachers received emails and/or social media regarding Iowa GIS resources and training notifications
- IowaView employed one graduate student who worked to develop a lesson plan for our IowaShots images



Cautionary Waters is an Iowa as Art piece that was created during GY23. The piece shows images of two major flood events in 1993 and 2024 compared to two non-flood years in Northwest Iowa. The image statement asks viewers which scenarios we are planning for in our communities. It is currently a part of a local exhibit called "Do Justice," which runs October 2024 to January 2025 in Ames, Iowa.

Iowa Atlas: The Iowa Atlas is being developed by a group of volunteer GIS professionals and is targeted towards K-12 students. This effort started as a partnership between IV Coordinator Amy Logan and Dr. Thomas Larsen, a professor at the University of Northern Iowa and co-director of the Geographic Alliance of Iowa. In August 2024, the first mapathon was held at ISU with 8 volunteer GIS professionals.



Photos: Iowa Atlas Mapathon held on August 10, 2024. Testimonial below from an Iowa Atlas mapathon participant.

"I am grateful to have joined GIS practitioners from around the state of Iowa at the first statewide Mapathon aimed at producing an Iowa atlas for K-12 students. As a former 7-12 social studies teacher and a current history education specialist, I was particularly interested in developing maps that highlight Iowa's historical narrative" ... "This work allowed me to collaborate with GIS professionals from across the state, where we shared ideas and developed new approaches to making these maps accessible and useful for K-12 classrooms. These conversations have been invaluable in helping me think creatively about how this atlas, combined with the exceptional educational resources from the State Historical Society of Iowa, can support teachers statewide."

IOWAVIEW CONSORTIUM MEMBERSHIP

The mission of the IowaView Consortium is to increase the knowledge and use of remote sensing and other geospatial technologies for the benefit of the citizens of Iowa, through education, research and service. IowaView supports the collection and management of publicly accessible remote sensing data archives (ortho.gis.iastate.edu) which includes current and historic imagery, LiDAR elevation and other datasets useful for research and education. Collaborators come from various departments at ISU as well as from public agencies and organizations.



IowaView Principal Investigator:
Brian Gelder, GIS Facility Academic Lead
Iowa State University
515-294-3144
bkgelder@iastate.edu



<https://www.iowaview.org>

State Coordinator: Amy Logan
515-294-0980
amylogan@iastate.edu